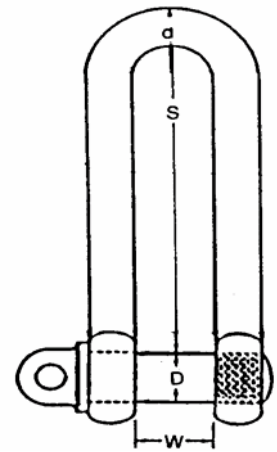


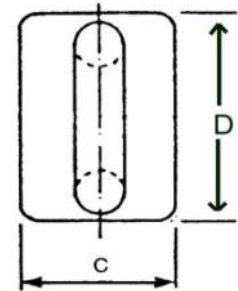
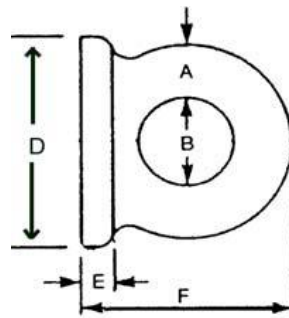
Long Bodied Piling Shackle



Product Code	S.W.L. (Tons)	a (mm)	D (mm)	W (mm)	S (mm)	E (mm)	Weight Each (kgs)
PS1T	1	13	16	22	152	32	0.55
PS2T	2	16	22	38	203	45	1.64
PS3T	3	22	25	45	254	50	2.29
PS3.75T	3.75	25	28	50	254	57	3.40
PS5T	5	28	32	54	305	64	5.05



Weld On Deck Plates



Product Code	Proof Load (tonnes)	AP NO.	In	A (mm)	B (mm)	C (mm)	D (mm)	E (mm)	F (mm)	Weight (kgs)
DECK2T	2	4014	3/8	10	20	25	45	6	38	0.14
DECK3.5T	3.5	4015	1/2	12	25	35	60	8	50	0.33
DECK5.5T	5.5	4016	5/8	16	32	45	70	10	64	0.53
DECK7.5T	7.5	4017	3/4	19	38	50	85	12	76	0.77
DECK9.6T	9.6	4018	7/8	22	42	60	102	13	89	1.27
DECK13T	13	4019	1.00	25	50	70	115	16	100	2.00
DECK15.75T	15.75	4020	1.1/8	28	57	76	130	18	114	2.9
DECK20T	20	4021	1.1/4	32	64	85	145	19	128	3.44
DECK29T	29	4023	1.1/2	38	75	100	170	22	152	6.58

G80 Weld On Hook



Product code	WLL (T)	A (mm)	W (mm)	P (mm)	T (mm)	L (mm)	H (mm)	F (mm)	N.W. Kg
WOH2T	2	5	80	25	20	94	24	34	0.84
WOH3T	3	6	115	30	24	105	30	36	1.18
WOH5T	5	10	155	34	28	132	43	44	2.50
WOH8T	8	12	160	34	38	135	51	51	3.26
WOH10T	10	15	200	50	39	167	55	53	5.17

