

Battery Hoist / Winch Kit

HOIST & WINCH
DUKE



DCW-250
With hook
for lifting

Power
control with
battery



DCW-250
Used as a
winch



- ◆ Use as a winch with a pulling capacity of 750kg
- ◆ Use as a hoist WLL 140kg. Single fall
- ◆ WLL 250kg Double fall

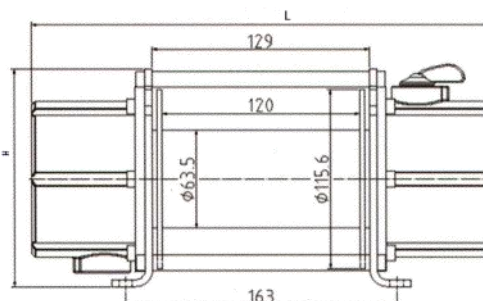
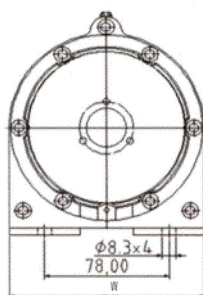
- ◆ A truly flexible hoist / winch kit, all supplied in a tough plastic moulded case.
- ◆ A great option for areas without a power supply or for occasional rigging / lifting applications.
- ◆ Suitable for outdoor pursuits, i.e. Winching equipment on and off trailers.

- ◆ The lightweight and compact design makes this unit very portable and easy to use.

- ◆ Power by DC 18V Rechargeable NiHM battery.
- ◆ Battery performance approx. 15min. Continuous use with a full load. (*extra batteries available*)

- ◆ LED loading display and overload warning buzzer, which sounds when overloading occurs.

Battery condition indicator
Green - Full Strength
Yellow - Medium
Red - Weak



Product Code	Lifting Capacity (kg)		Wire rope	Speed (M/min)		L (mm)	W (mm)	H (mm)	Nett Weight (kg)
	Pinned Hook	Pulley Hook		Single Fall	Double Fall				
DCW-250	140	250	5mm x 15M	4	2	271	122	143	7.5