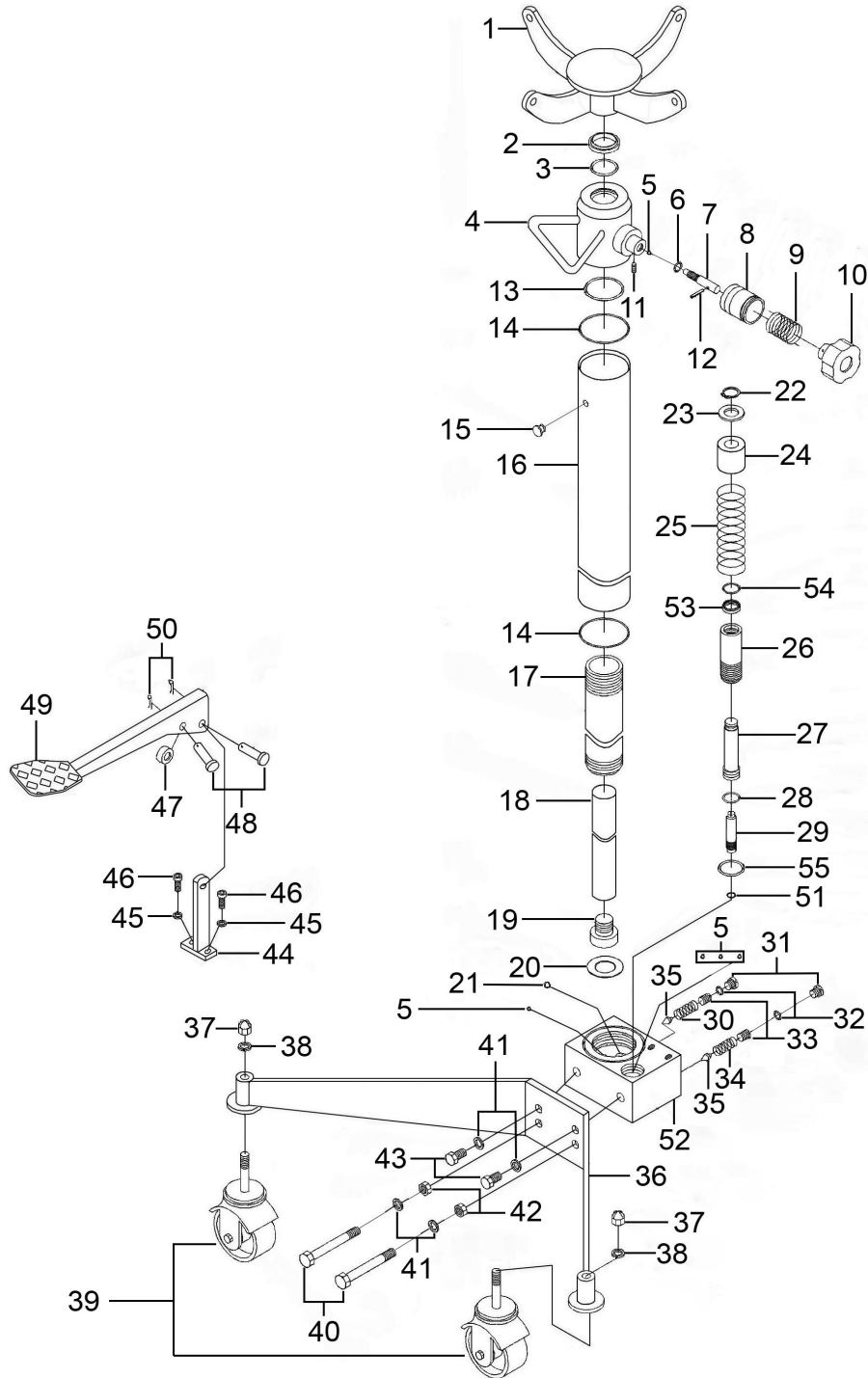




Parts Information:  
**Transmission Jack 0.3tonne Vertical Quick  
Lift**  
**Model No: 300TRQ.V2**



**NOTE:** It is our policy to continually improve products and as such we reserve the right to alter data, specifications and component parts without prior notice. There may be alternative versions of this product, please contact us should you require this information.

**IMPORTANT:** No liability is accepted for incorrect use of product. Spare parts must be fitted by a competent person

**WARRANTY:** Guarantee is 12 months from purchase date, proof of which will be required for any claim.

**Sealey Group**, Kempson Way, Suffolk Business Park, Bury St Edmunds, Suffolk. IP32 7AR



01284 757500



01284 703534



sales@sealey.co.uk



www.sealey.co.uk



Parts Information:  
**Transmission Jack 0.3tonne Vertical Quick  
Lift**  
**Model No: 300TRQ.V2**

Item	Part No.	Description
1	300TRQV2-01	Fork
2	300TRQV2-02	Oil Wiper Seal
3	300TRQV2-03	O-Ring
4	300TRQV2-04	Cylinder Head Ass'y
5	SB-6.0	Steel Ball 6.0mm
6	300TRQV2-06	O-Ring
7	300TRQV2-07	Release Rod
8	300TRQV2-08	Bush
9	300TRQV2-09	Spring
10	300TRQV2-10	Release Knob
11	GSM58.S	Grub Screw M5x8
12	300TRQV2-12	Spring Pin M4 X 24
13	AK45X.V2-29	O-Ring
14	DH03.V2-02	O-Ring
15	1000TRQV2-15	Oil Filler Plug
16	300TRQV2-16	Oil Reservoir
17	300TRQV2-17	Cylinder
18	300TRQV2-18	Piston Rod
19	300TRQV2-19	Piston Screw
20	300TRQV2-20	Steel Seal
21	SB-8.0	Steel Ball 8.0mm
22	SM353CEV2.048	External Circlip
23	RW1656.S	Repair washer M16x56
24	300TRQV2-24	Bush
25	300TRQV2-25	Spring
26	300TRQV2-26	Pump Cylinder
27	300TRQV2-27	Outer Pump Piston
28	300TRQV2-28	O-Ring

Item	Part No.	Description
29	300TRQV2-29	Inner Pump Piston
30	300TRQV2-30	Overload Spring
31	300TRQV2-31	Screw
32	DH03.V2-39	O-Ring
33	300TRQV2-33	Screw
34	300TRQV2-34	Quick Lift Spring
35	300TRQV2-35	Taper Valve
36	300TRQV2-36	Leg
37	SN12.SD	Steel Nut M12 Domed
38	2050CXL/36	Spring Washer M12 Black
39	600TRQV2-39	Wheel, Swivel Castor
40	HHB10120.S	Hex Head Bolt M10 x 120mm
41	SWM10.SB	Spring Washer M10 Black
42	SN10.S	Steel Nut M10 Zinc
43	SS1020.S	Hex Head Set Screw M10 X 20
44	300TRQV2-44	Linkage Stand
45	SWM8.SB	Spring Washer M8 Black
46	SCB825.S	Socket Cap Bolt M8 x 25
47	300TRQV2-47	Pedal Bearing Bush
48	300TRQV2-48	Pin
49	300TRQV2-49	Pump Pedal
50	300TRQV2-50	R-Clip
51	300TRQV2-51	O-Ring
52	300TRQV2-52	Pump Base
53	300TRQV2-53	Seal
54	300TRQV2-54	O-Ring
55	300TRQV2-55	O-Ring

**NOTE:** It is our policy to continually improve products and as such we reserve the right to alter data, specifications and component parts without prior notice. There may be alternative versions of this product, please contact us should you require this information.

**IMPORTANT:** No liability is accepted for incorrect use of product. Spare parts must be fitted by a competent person

**WARRANTY:** Guarantee is 12 months from purchase date, proof of which will be required for any claim.

**Sealey Group**, Kempson Way, Suffolk Business Park, Bury St Edmunds, Suffolk. IP32 7AR



01284 757500



01284 703534



sales@sealey.co.uk



www.sealey.co.uk