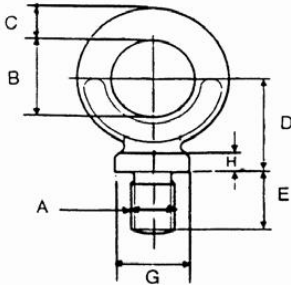


Dynamo Metric Course Thread

Product Code: DEB



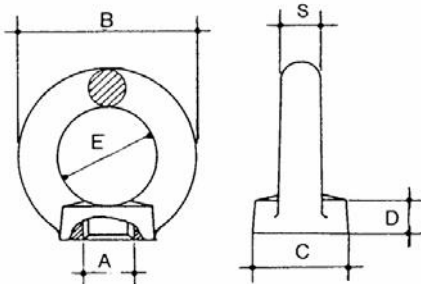
Sizes marked * are additional & proportional to the specification



	Vertical SWL tonnes	A (mm)	B (mm)	C (mm)	D (mm)	E (mm)	G (mm)	H (mm)	Weight EA (Kgs)
*	0.10	6	22	9	27	18	17	5	0.07
*	0.15	8	22	9	27	18	17	5	0.07
*	0.25	10	22	9	27	18	17	5	0.07
	0.32	12	22	9	27	18	17	5	0.07
*	0.50	14	29	13	41	28	29	9	.14
	0.63	16	29	11	34	23	23	6	.14
*	1.00	18	40	15	47	32	32	9	.40
	1.25	20	40	15	47	32	32	9	.40
	1.60	22	44	17	53	35	35	14	.61
	2.00	24	51	19	60	40	40	12	.80
	3.20	30	64	24	76	51	51	14	1.72

Eyenuits to Din 582 Metric Course Thread

Product Code: EN-DIN



SWL (kgs)	A (mm)	B (mm)	C (mm)	D (mm)	E (mm)	F (mm)	Weight EA (kgs)
140	8	36	20	8.5	20	8	0.35
230	10	45	25	10	25	10	0.44
340	12	54	30	11	30	12	0.60
700	16	63	35	13	35	14	0.82
1200	20	72	40	16	40	16	1.15
1800	24	90	50	20	50	20	2.36
3600	30	108	65	25	60	24	5.20
5100	36	126	75	30	70	28	10.9
7000	42	144	85	35	80	32	19.94
8600	48	166	100	40	90	38	36.15