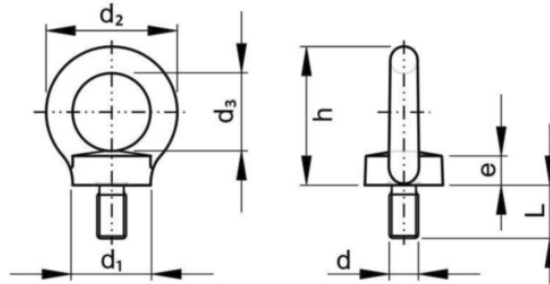


M16 safety anchor EyeFix EN-795:2012 type A



Product Information

- Versions M16 bolt, M16 nut, M16 nut with thread for brick and concrete walls
- Suitable for metal- and concrete constructions
- Fixation in threaded hole, bolted or with separate thread
- Threaded hole minimum free length 27mm
- Maximum 3 persons
- EN-795:2012 type A & TS 16415:2013
- Tested 22kN
- Suitable for Rope Access 15kN
- Unique serial number laser engraved

Technical Information

- Threaded hole M16, bolt hole >16mm
- Material AISI316 / RVS A4
- Fixation in threaded hole with chemical glue, glued with bolt, glued with threaded rod end
- Easy in use, very solid, reliable
- Optional coating in various RAL-colors
- Dimensions d1=35mm, d2=63mm, d3=35mm, e=12mm, h=62mm, L=27mm, P=2mm, d=16mm
- Information and serial number laser engraved
- Weight 0,27 kg



Marking & Information

